



Inchiriere Miniexcavator hidraulic CATERPILLAR model 302.5C din Cluj

Marca: CATERPILLAR.

Model: 302.5

An:2012.

Greutate Operatională: 2700kg.

Putere Motor: 27CP

Adancime excavare 2600mm

Latimea peste senile 2200 mm

Rotirea bratului: 60°

Viteza de deplasare : 5 km/h

Senile de cauciuc

Cabina Incalzita

Putere motor 27 CP brut

Transmisie :Hidrostatica,

sistem hidraulic tip bucla inchisa

Balansier standard,

adancime de sapare 2600 mm

Rotire brat excavare

Echipare:

Aer conditionat

Linie auxiliara hidraulica

Lumini pentru lucru

Oglinzi exterioare

Alarma de mers inapoi

Certificat de origine

Picon Hammer

Cupa de excavare de 300 mm latime

Cupa excavare 460mm,

Cupa excavare 600mm,

Cupa excavare cupa taluzare 1000mm



- * Programul de lucru este de 9 ore de Luni pana Vineri de la 8:00 la 18:00
- * Tarifele sunt calculate cu motorina beneficiarului
- * Beneficiarul asigura mancarea si cazarea pentru operator
- * Tarifele nu contin T.V.A.
- * Dislocarea si relocarea utilajelor la /de la punctele de lucru vor fi suportate de catre beneficiar.

Engine

| | | |
|----------------------------|---------------------------|---------|
| Model | Mitsubishi S3L2 NA Diesel | |
| Rated net power (ISO 9249) | 18.6 kW | 24.9 hp |
| Gross power | 19.9 kW | 26.7 hp |

- Meets U.S. EPA Interim Tier 4 emissions requirements.
- Ratings at 2,300 rpm.

Weights

| | | |
|------------------------------|---------|----------|
| Operating weight with canopy | 2745 kg | 6,052 lb |
| Operating weight with cab | 2850 kg | 6,283 lb |

- Weight with rubber tracks, bucket, operator, full fuel and auxiliary lines.
- Weight varies depending on machine configuration.

Engine Dimensions

| | | |
|--------------|-------|----------------------|
| Bore | 78 mm | 3.07 in |
| Stroke | 92 mm | 3.62 in |
| Displacement | 1.3 L | 80.4 in ³ |

Travel System

| | | |
|---------------------------------|----------|-----------|
| Travel speed – high | 5 km/h | 3.1 mph |
| Travel speed – low | 2.5 km/h | 1.6 mph |
| Max traction force – high speed | 12.4 kN | 2,788 lbf |
| Max traction force – low speed | 23.6 kN | 5,305 lbf |
| Gradeability (max) | 30° | |

Hydraulic System

| | | |
|---|------------|--------------|
| Pump – gear (tandem) | 31.2 L/min | 8.2 gal/min |
| Pump – gear (single) | 18.4 L/min | 4.9 gal/min |
| Operating pressures – equipment | 221 bar | 3,205 psi |
| Operating pressure – travel | 221 bar | 3,205 psi |
| Operating pressure – swing | 174 bar | 2,524 psi |
| Auxiliary circuits – Primary (174 bar/2,524 psi) | 64 L/min | 16.9 gal/min |
| Auxiliary circuits – Secondary (174 bar/2,524 psi) | 14.4 L/min | 3.8 gal/min |
| Digging force – Stick, standard | 15.3 kN | 3,440 lbf |
| Digging force – Stick, long | 13.1 kN | 2,945 lbf |
| Digging force – Bucket | 24.2 kN | 5,440 lbf |

Swing System

| | | |
|----------------------------------|------------------------|--|
| Type | Hydraulic motor-driven | |
| Machine swing speed | 9.5 rpm | |
| Boom swing – left (without stop) | 90° | |
| Boom swing – left (with stop) | 54° | |
| Swing – right | 48° | |

- Automatic swing brake, spring applied, hydraulic release.
- Centralized lubrication.

Sound Levels

| | |
|--------|----------|
| Canopy | 81 dB(A) |
| Cab | 81 dB(A) |

- Operator sound pressure levels measured per ISO 6396 (dynamic).

Electrical System

- 50-amp alternator
- 12-volt, 650 CCA, 52 amp/h
- Sealed electrical connectors

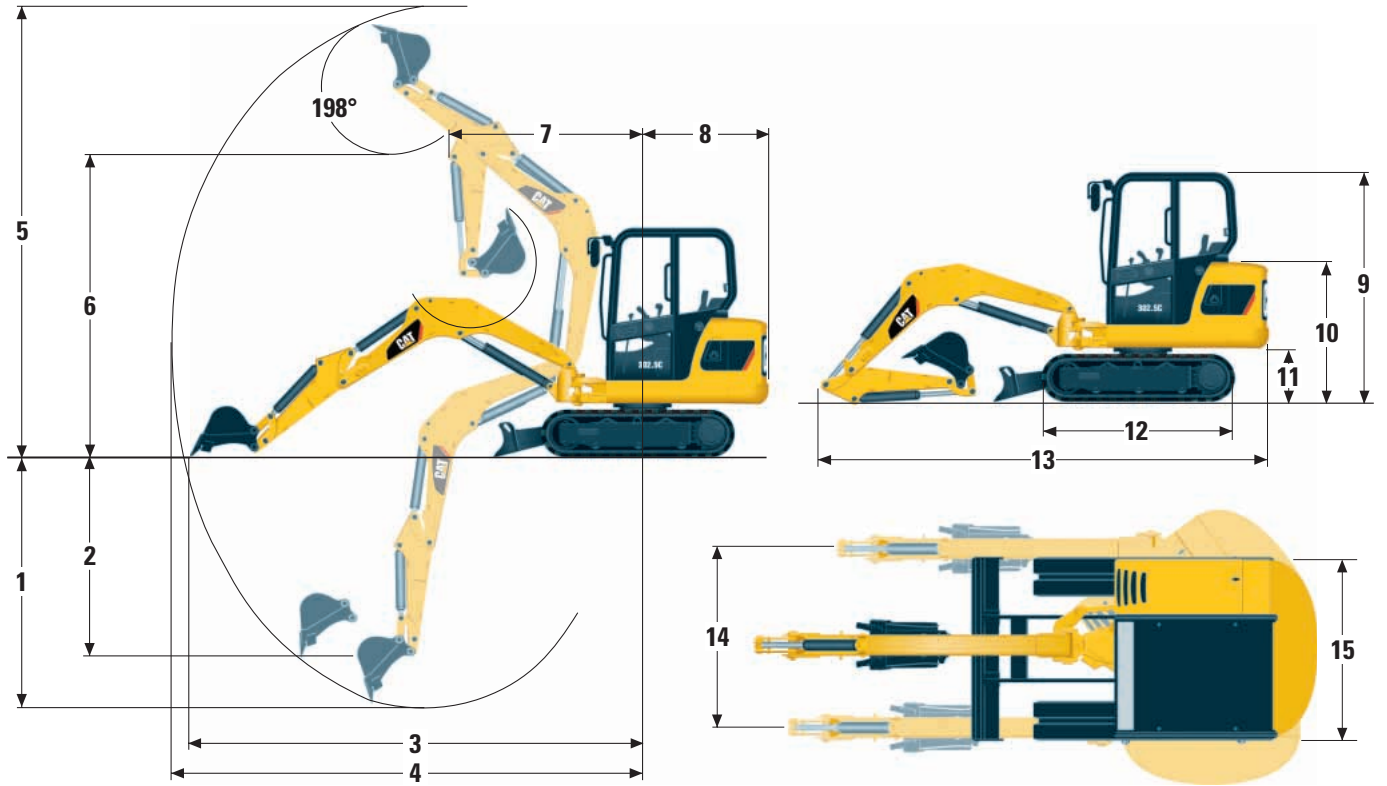
Blade

| | | |
|-------------|---------|---------|
| Width | 1450 mm | 57.1 in |
| Height | 320 mm | 12.6 in |
| Dig depth | 420 mm | 16.5 in |
| Lift height | 285 mm | 11.2 in |

Service Refill Capacities

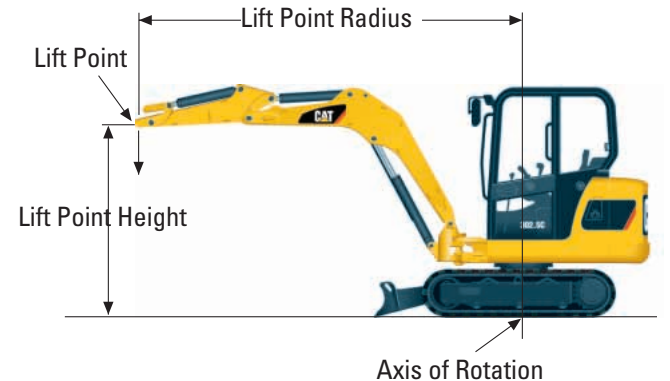
| | | |
|------------------|-------|----------|
| Cooling system | 4.5 L | 1.2 gal |
| Engine oil | 6.4 L | 1.7 gal |
| Fuel tank | 38 L | 10 gal |
| Hydraulic tank | 36 L | 9.5 gal |
| Hydraulic system | 50 L | 13.2 gal |

Dimensions and Lift Capacities



| | Standard Stick | | Long Stick | |
|----|----------------|--------|------------|--------|
| 1 | 2640 mm | 8'8" | 2930 mm | 9'7" |
| 2 | 1920 mm | 6'3" | 2180 mm | 7'2" |
| 3 | 4545 mm | 14'11" | 4810 mm | 15'9" |
| 4 | 4670 mm | 15'4" | 4930 mm | 16'2" |
| 5 | 4355 mm | 14'3" | 4530 mm | 14'10" |
| 6 | 3110 mm | 10'2" | 3280 mm | 10'9" |
| 7 | 1875 mm | 6'2" | 1890 mm | 6'2" |
| 8 | 1280 mm | 4'2" | 1280 mm | 4'2" |
| 9 | 2300 mm | 7'6" | 2300 mm | 7'6" |
| 10 | 1405 mm | 4'7" | 1405 mm | 4'7" |
| 11 | 545 mm | 1'9" | 545 mm | 1'9" |
| 12 | 1925 mm | 6'4" | 1925 mm | 6'4" |
| 13 | 4515 mm | 14'10" | 4515 mm | 14'10" |
| 14 | 1110 mm | 3'8" | 1110 mm | 3'8" |
| 15 | 1450 mm | 4'9" | 1450 mm | 4'9" |

| | | |
|-----------------------|---------|------|
| Track and blade width | 1450 mm | 4'9" |
| Gauge width | 1150 mm | 3'9" |
| Shoe width | 300 mm | 1' |



With tracks level on the ground.

| Lift Capacities at Ground Level | Over Front | | Over Side | | Over Front | | Over Side | |
|---------------------------------|-------------------|-----------|-----------|----------|------------|-----------|-----------|----------|
| | Lift point radius | 2500 mm | 8'2" | 2500 mm | 8'2" | 3500 mm | 11'6" | 3500 mm |
| Blade down | 1285 kg* | 2,833 lb* | 1090 kg | 2,403 lb | 816 kg* | 1,799 lb* | 671 kg | 1,479 lb |
| Blade up | 791 kg | 1,744 lb | 635 kg | 1,400 lb | 499 kg | 1,100 lb | 413 kg | 911 lb |

* Limited by hydraulic capacity rather than tipping load.

The above loads are in compliance with SAE hydraulic excavator lift capacity rating standard SAE J1097 and do not exceed 87% of hydraulic lifting capacity or 75% of tipping capacity.

Excavator bucket weight is not included on this chart. Lifting capacities are for standard stick.